

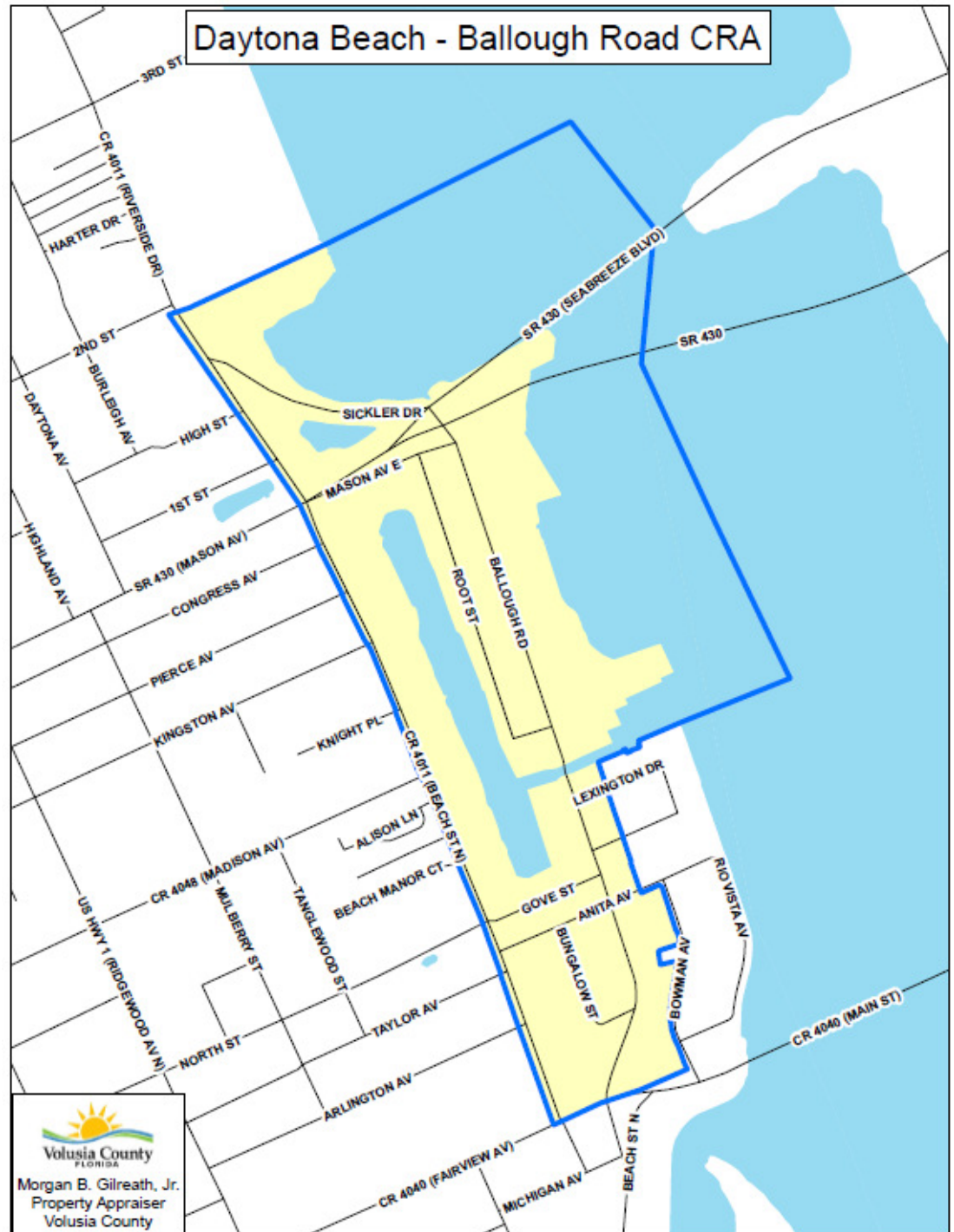
Boundary Maps of
Existing Community
Redevelopment Areas (CRAs)

Morgan B. Gilreath, Jr.
Volusia County Property Appraiser
October 2014

Daytona Beach – Ballough Road

Base Year – 1985

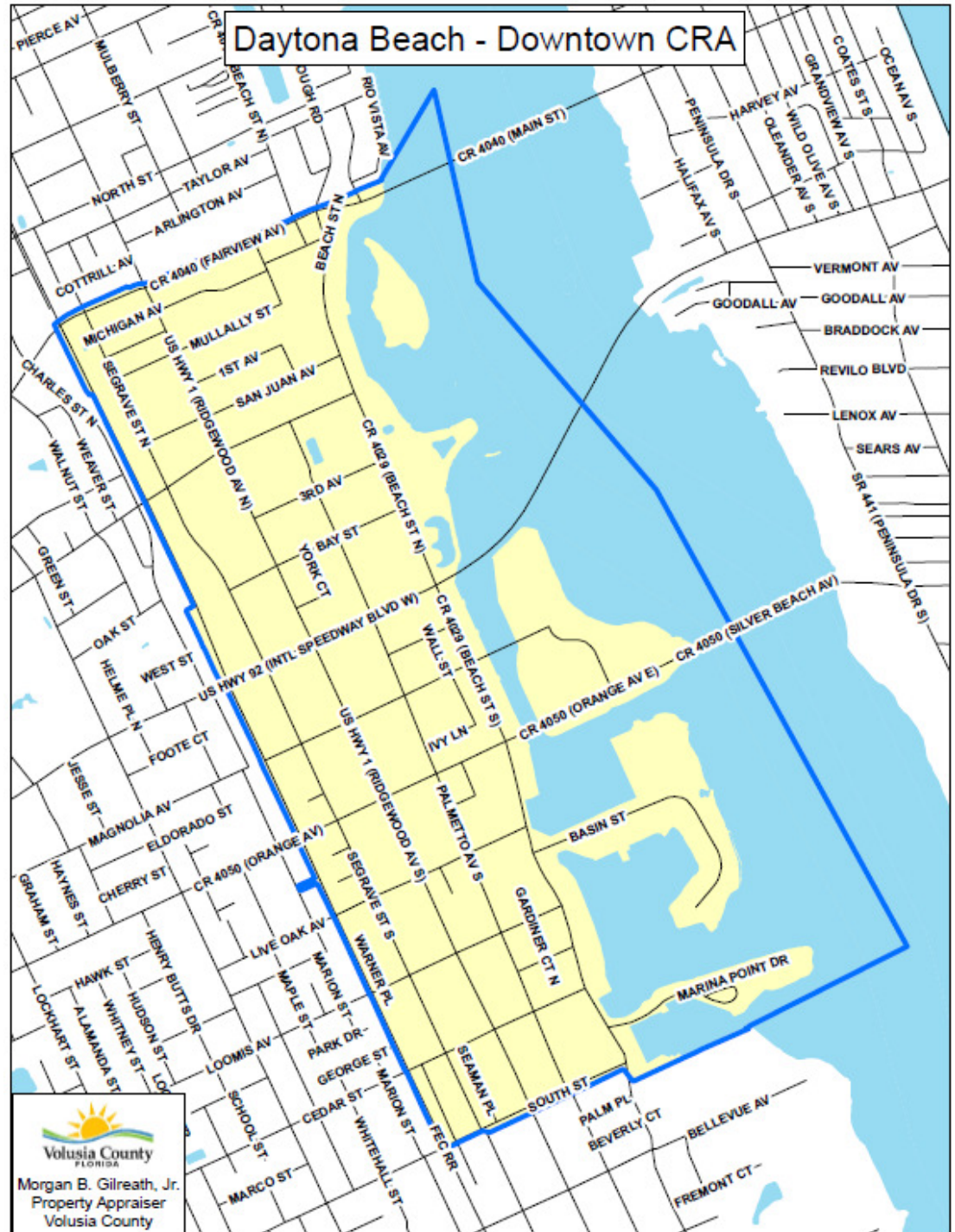
Base Taxable Value – 9,086,882



Daytona Beach - Downtown

Base Year – 1982

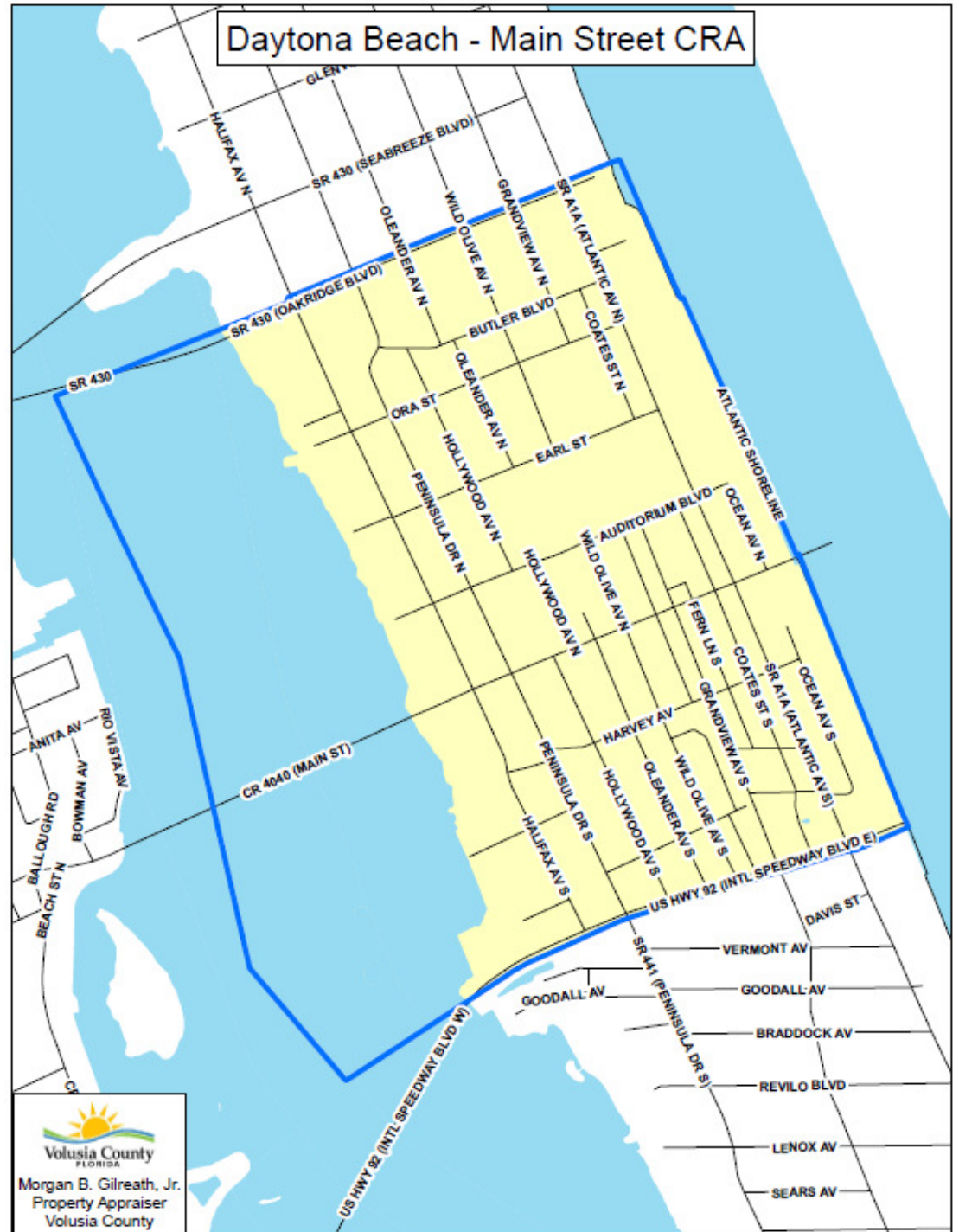
Base Taxable Value – 49,000,577



Daytona Beach – Main Street

Base Year – 1982

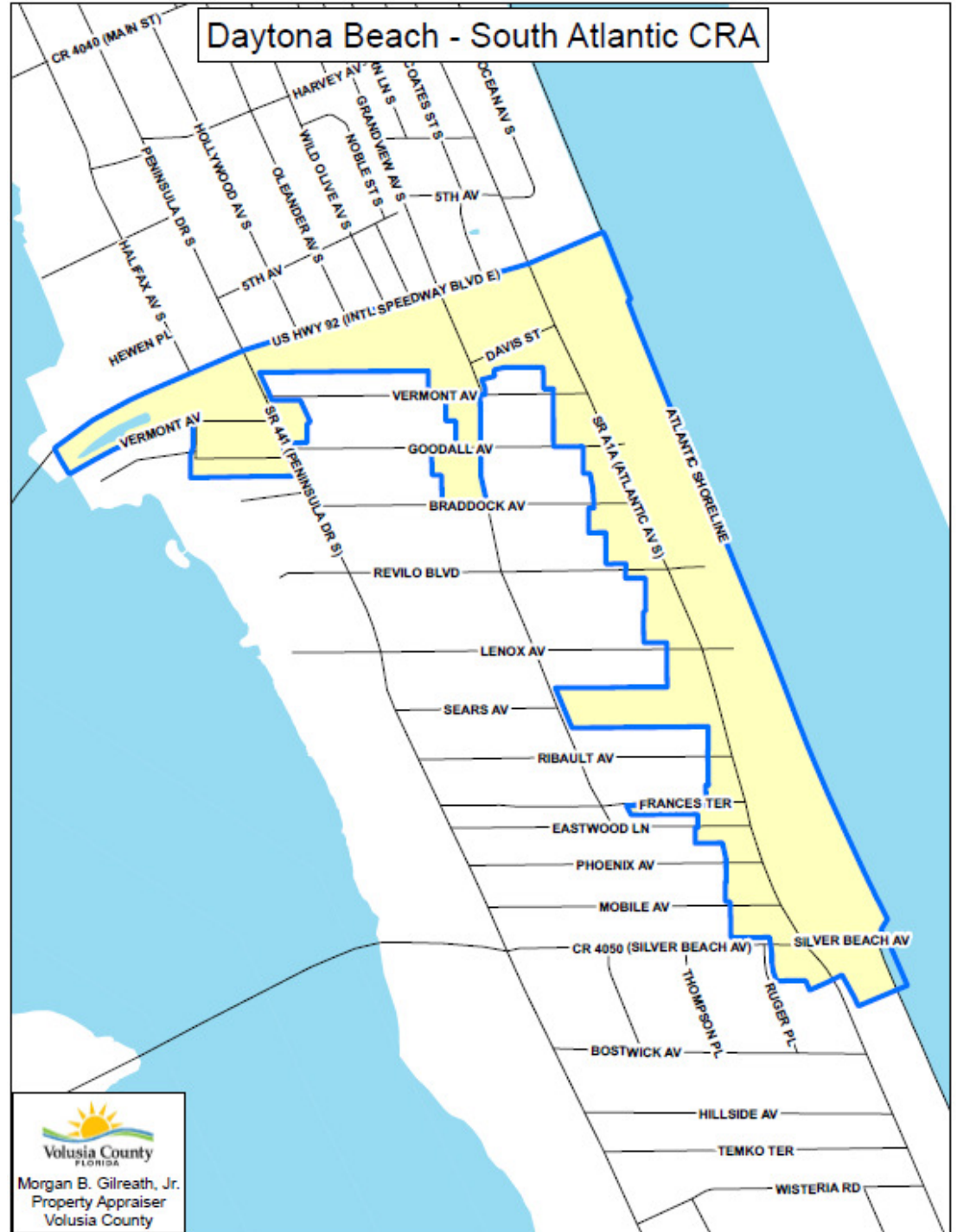
Base Taxable Value – 68,695,639



Daytona Beach – South Atlantic

Base Year – 2000

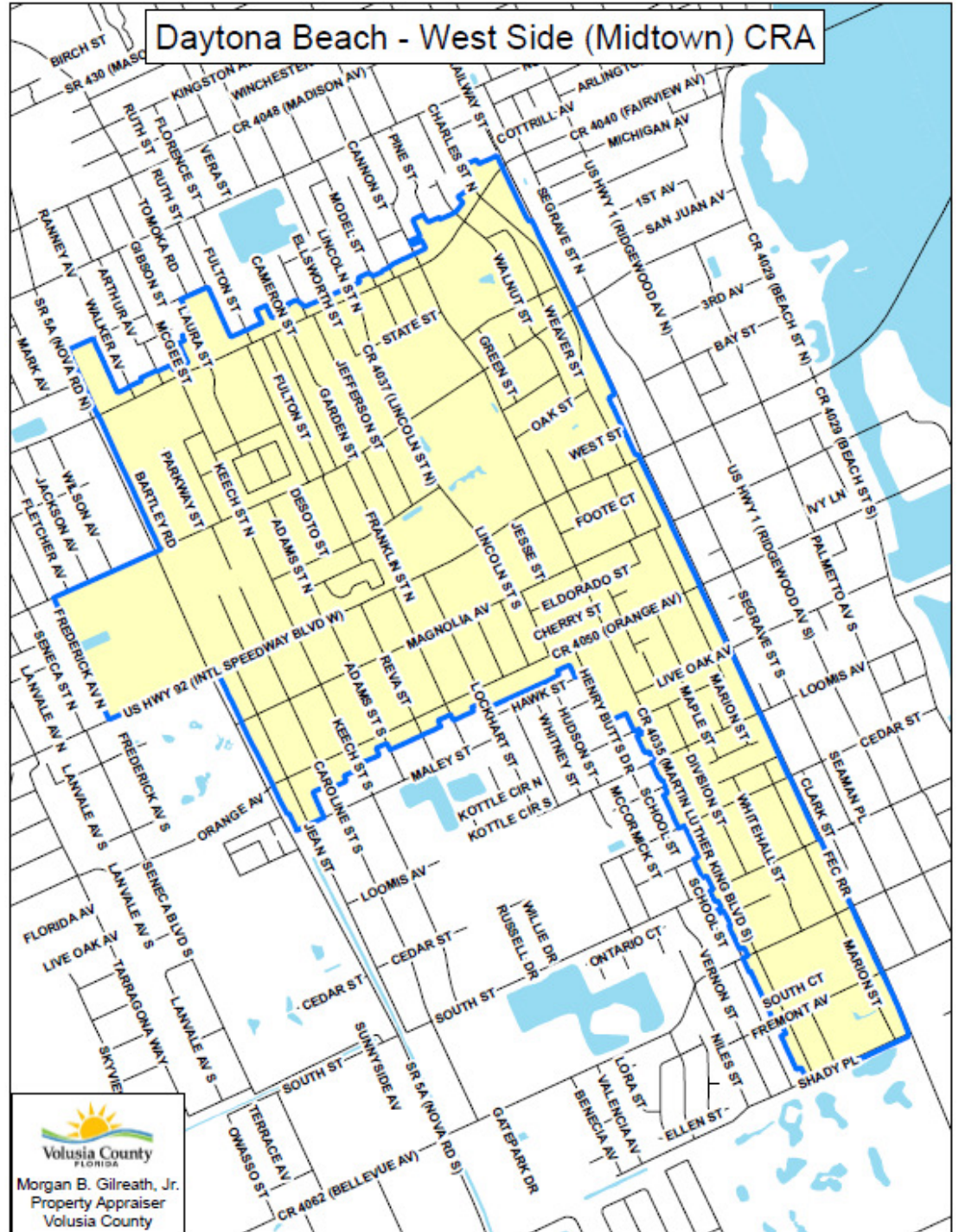
Base Taxable Value – 63,521,382



Daytona Beach – West Side (Midtown)

Base Year – 1997

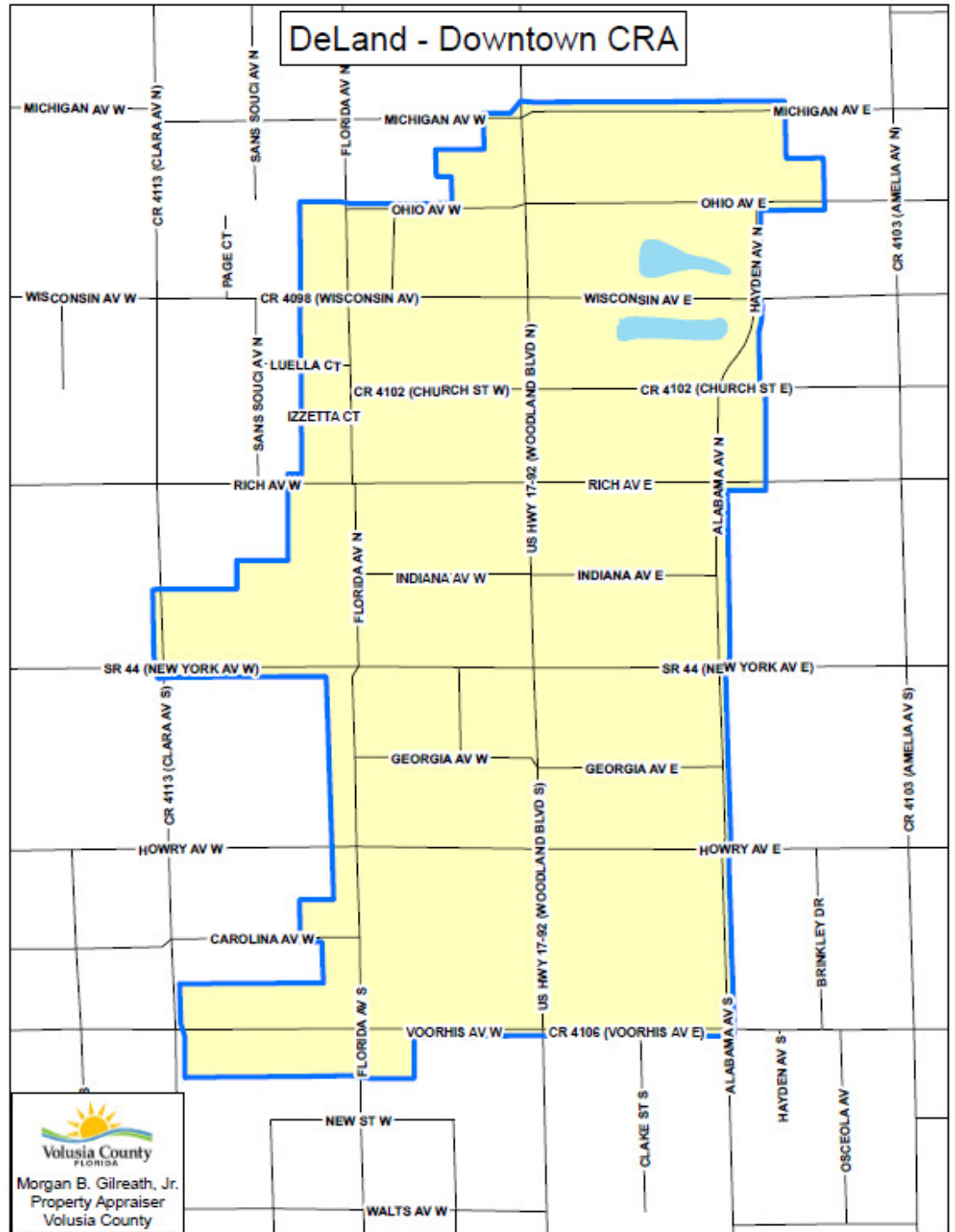
Base Taxable Value – 60,641,706



DeLand - Downtown

Base Year – 1984

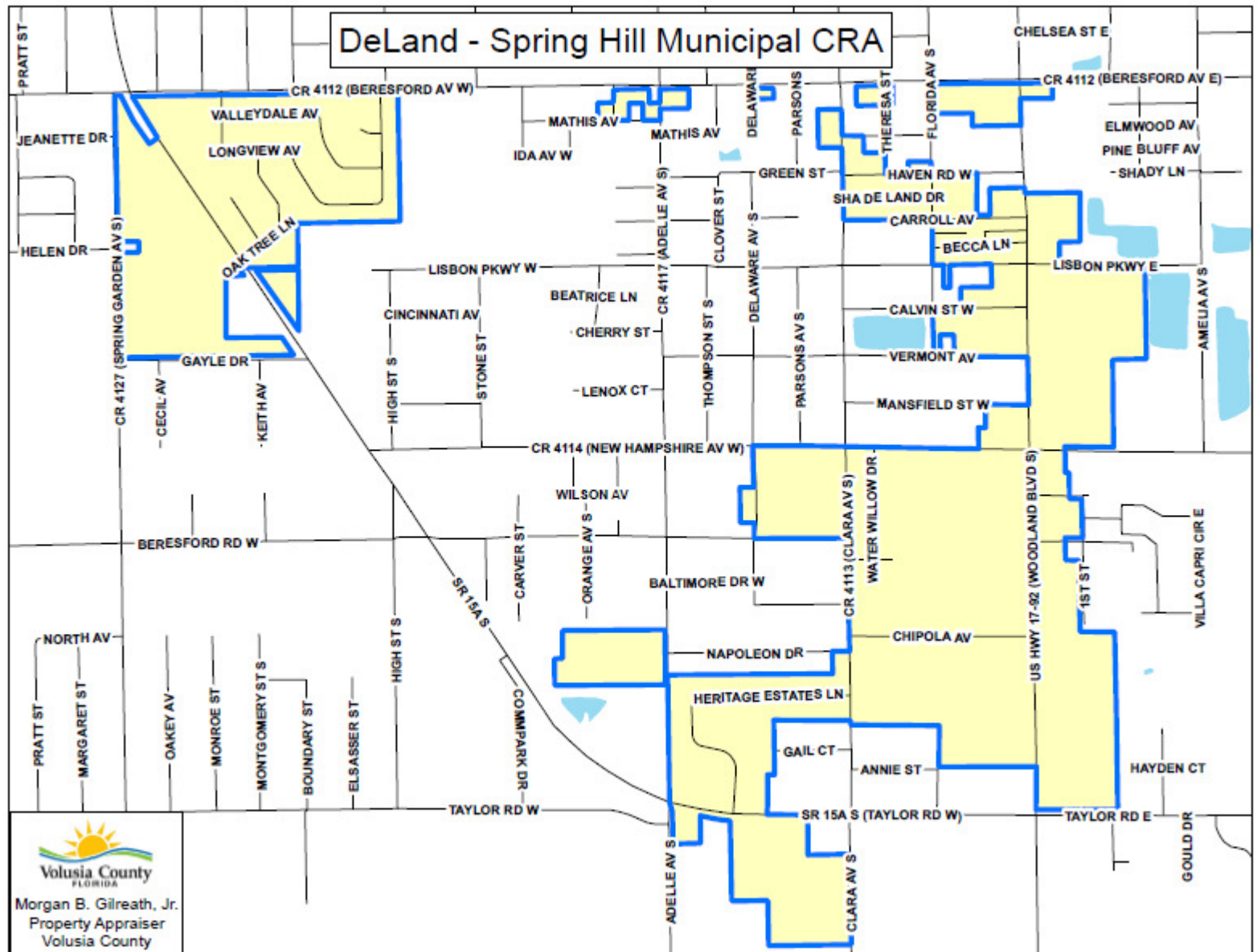
Base Taxable Value – 20,034,463



DeLand – Spring Hill - Incorporated

Base Year – 2004

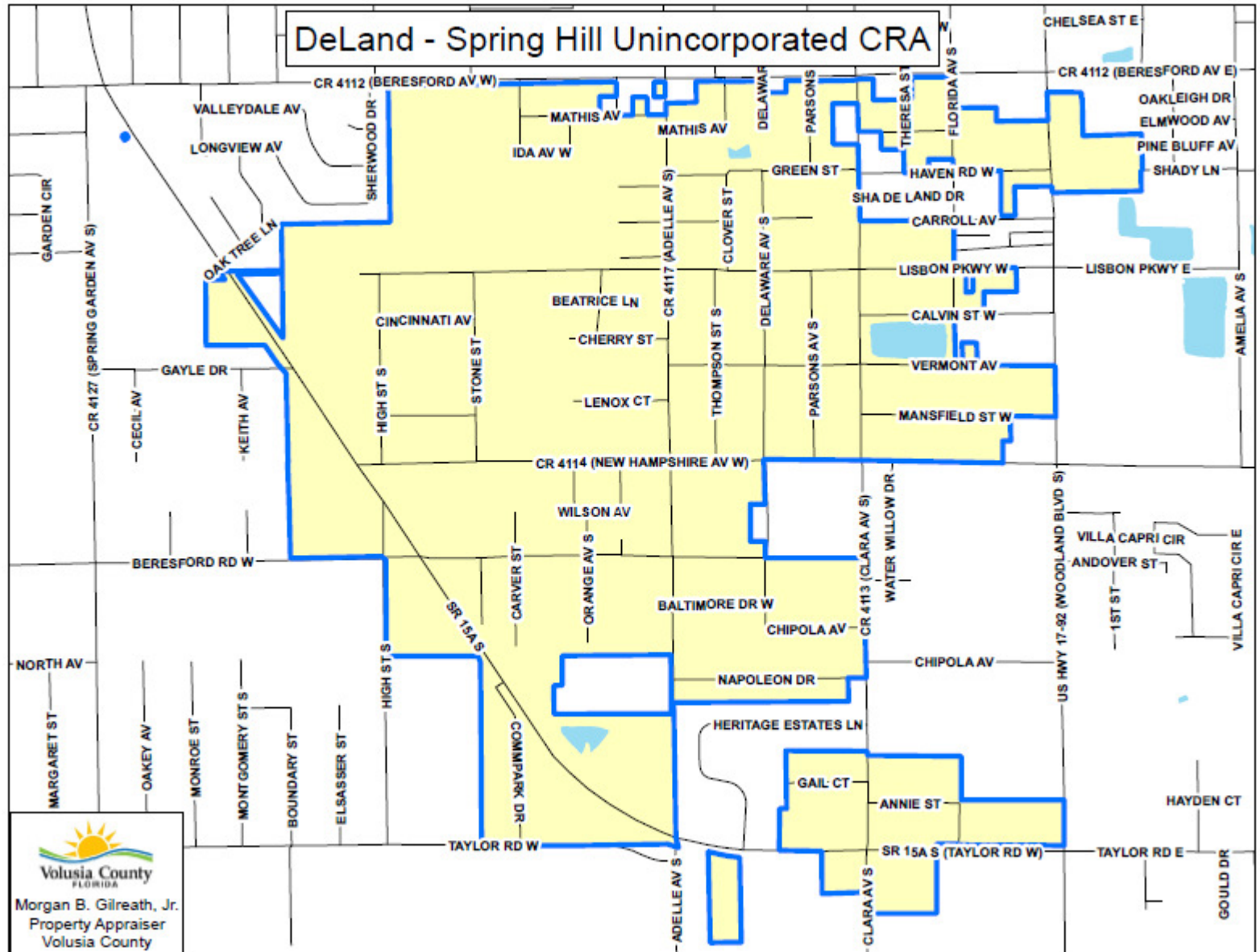
Base Taxable Value – 50,472,881



DeLand – Spring Hill - Unincorporated

Base Year – 2004

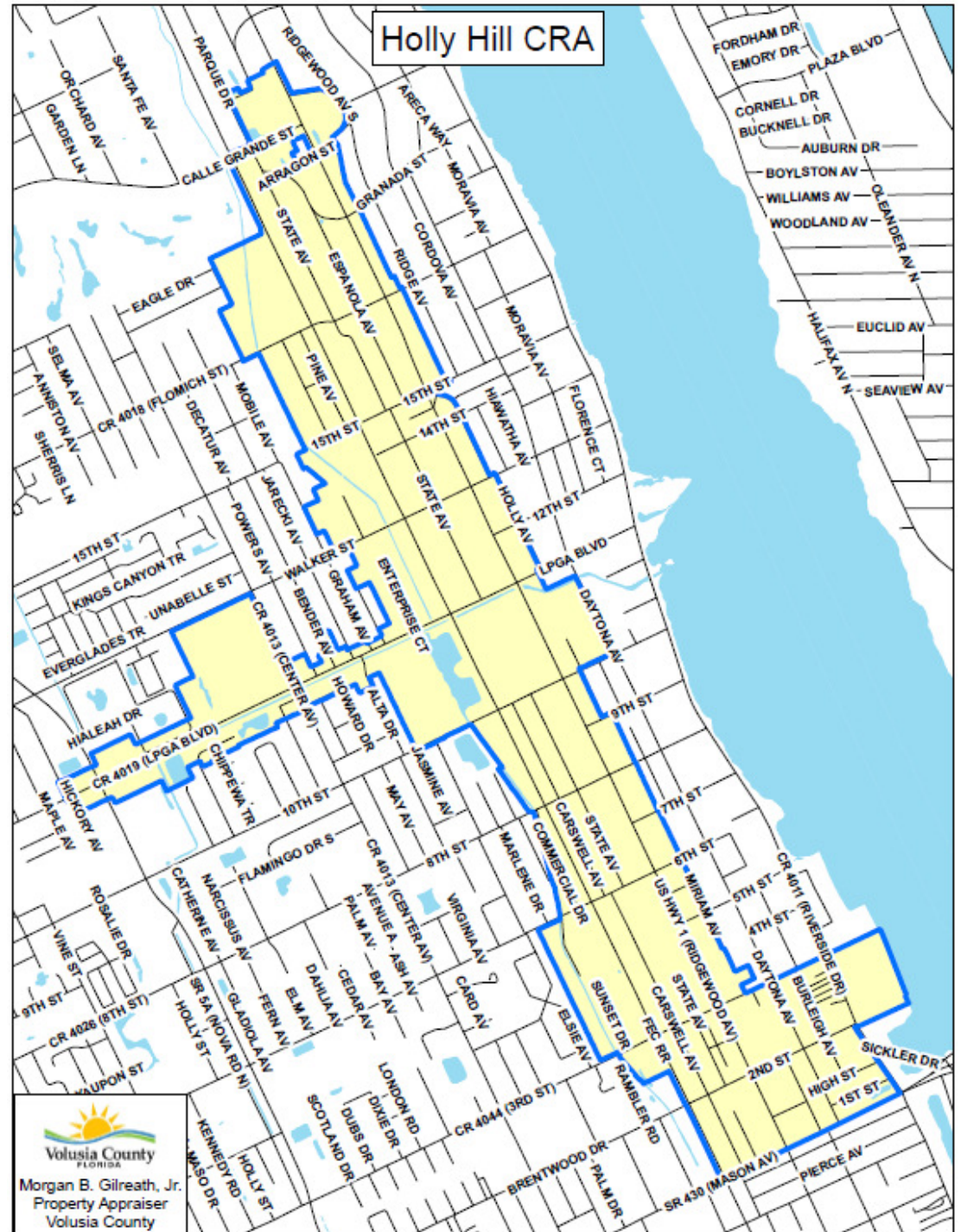
Base Taxable Value – 21,054,166



Holly Hill

Base Year – 1995

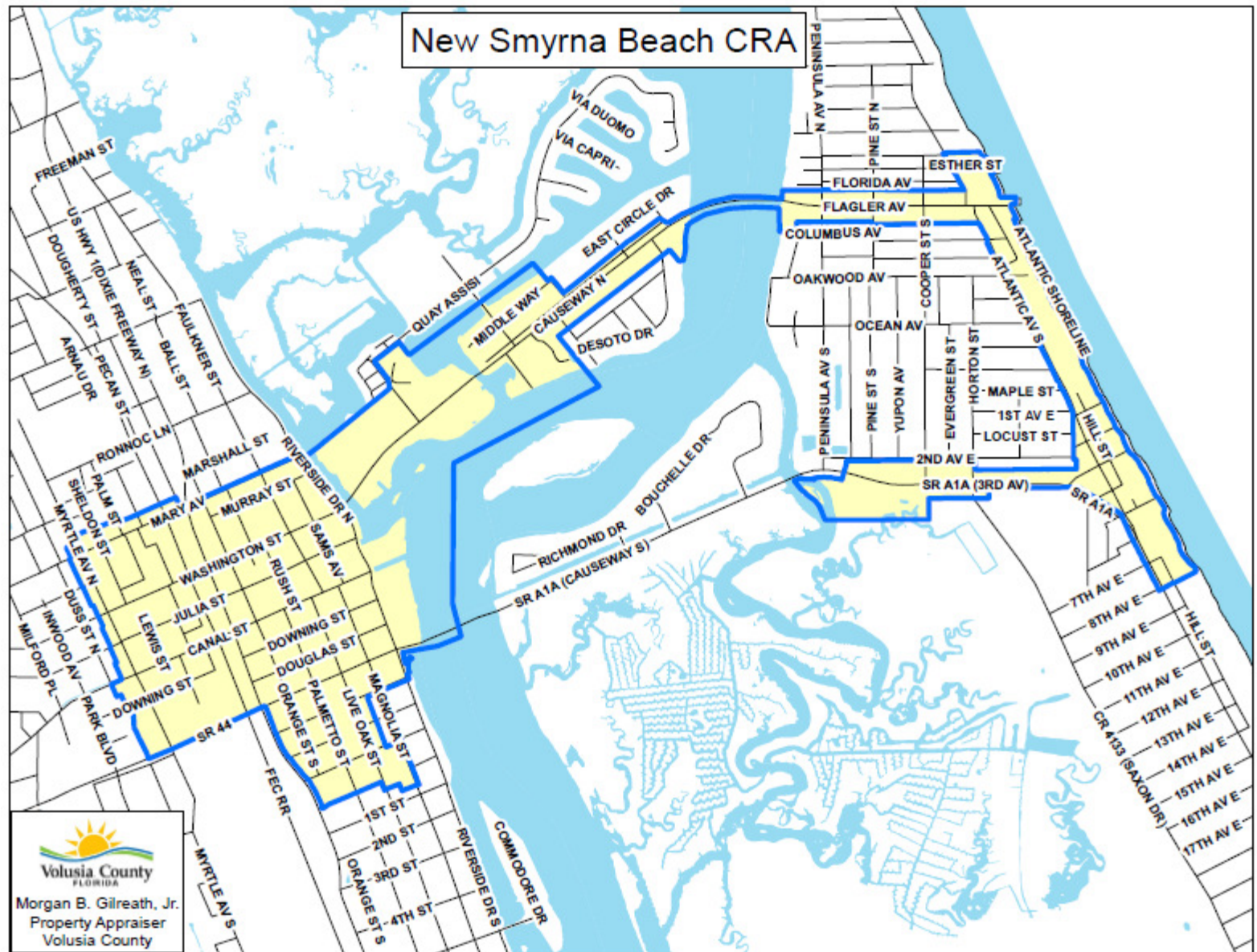
Base Taxable Value – 88,342,219



New Smyrna Beach

Base Year – 1985

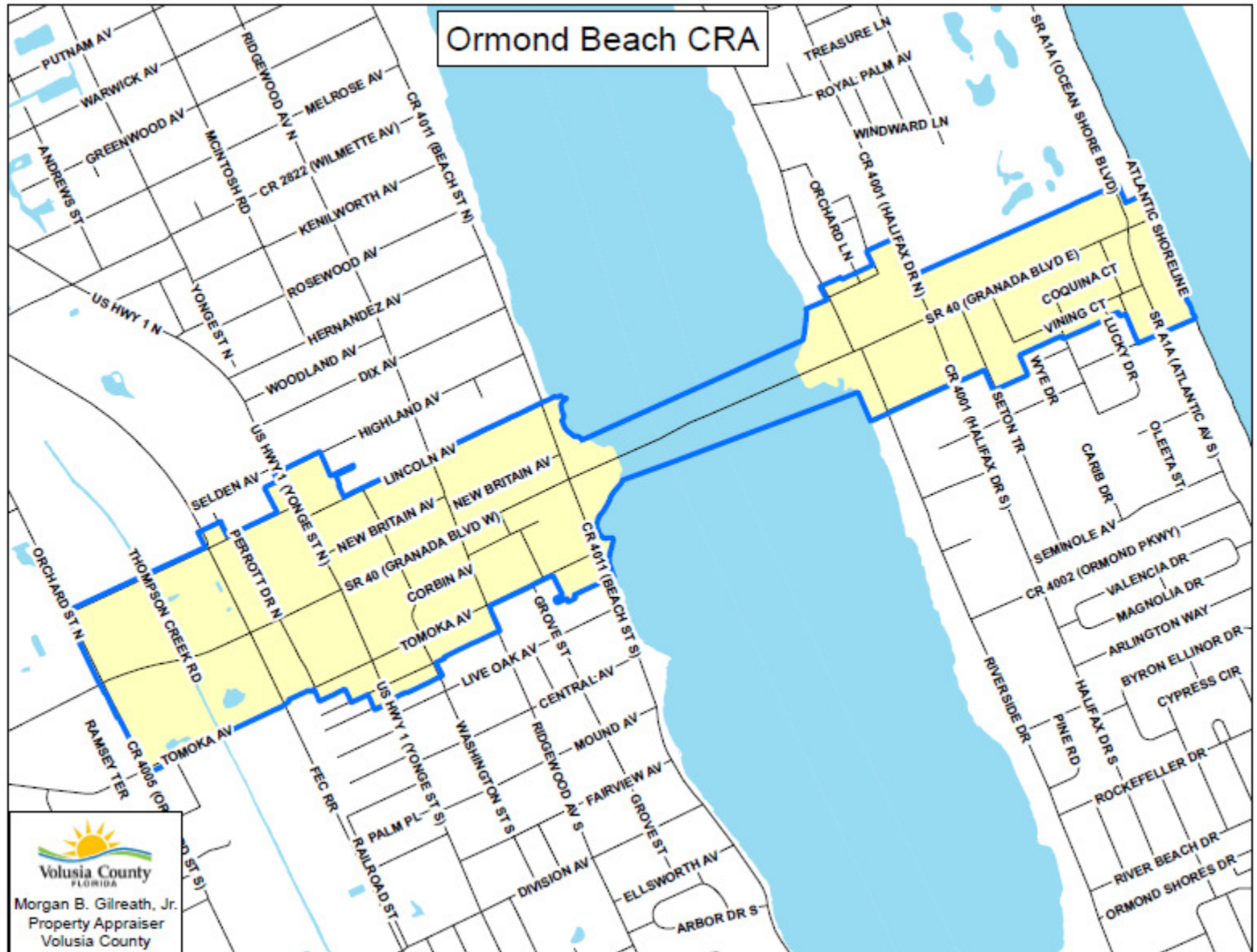
Base Taxable Value – 69,814,730



Ormond Beach

Base Year – 1984

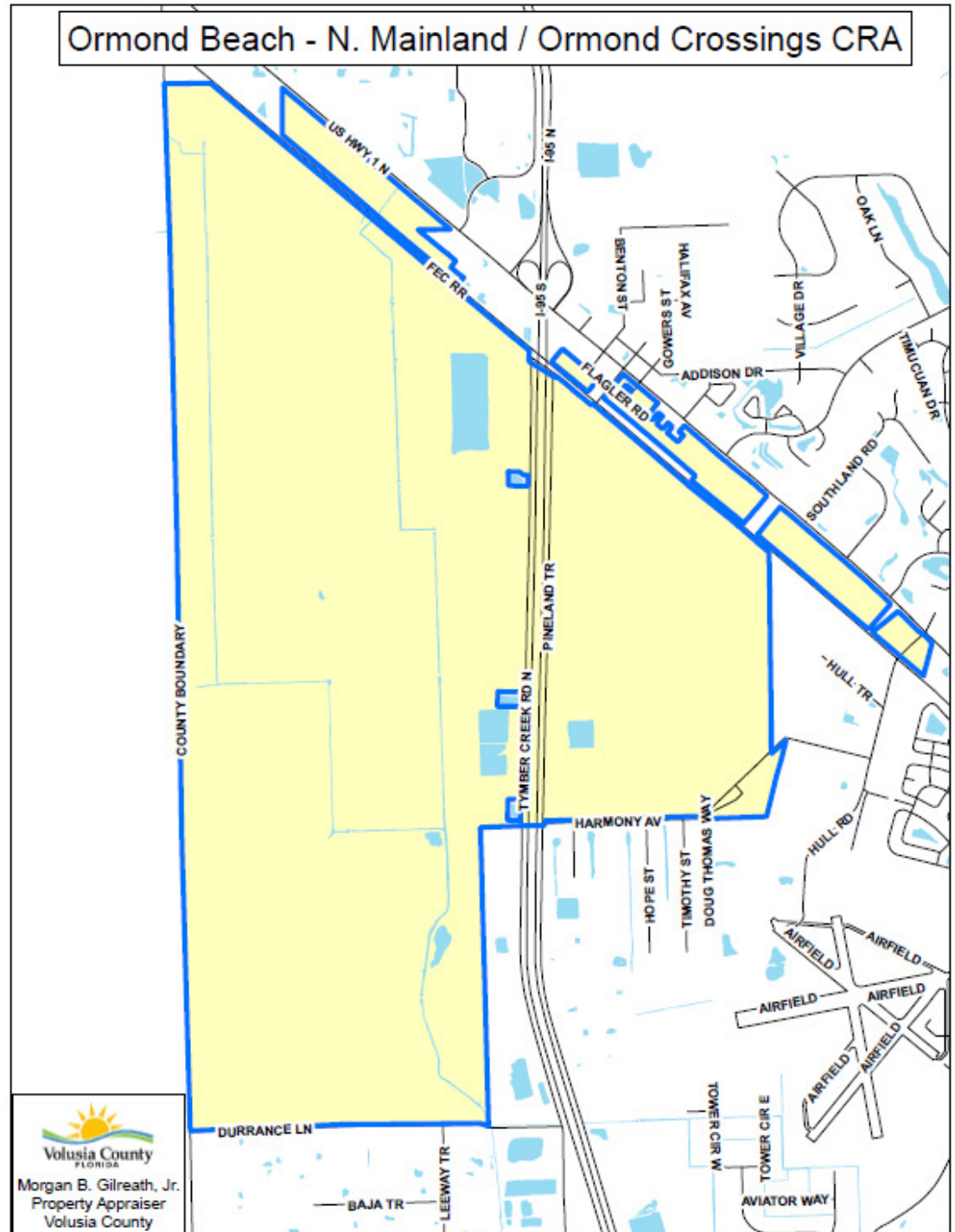
Base Taxable Value – 45,486,221



Ormond Beach – North Mainland /
Ormond Crossings

Base Year – 2006

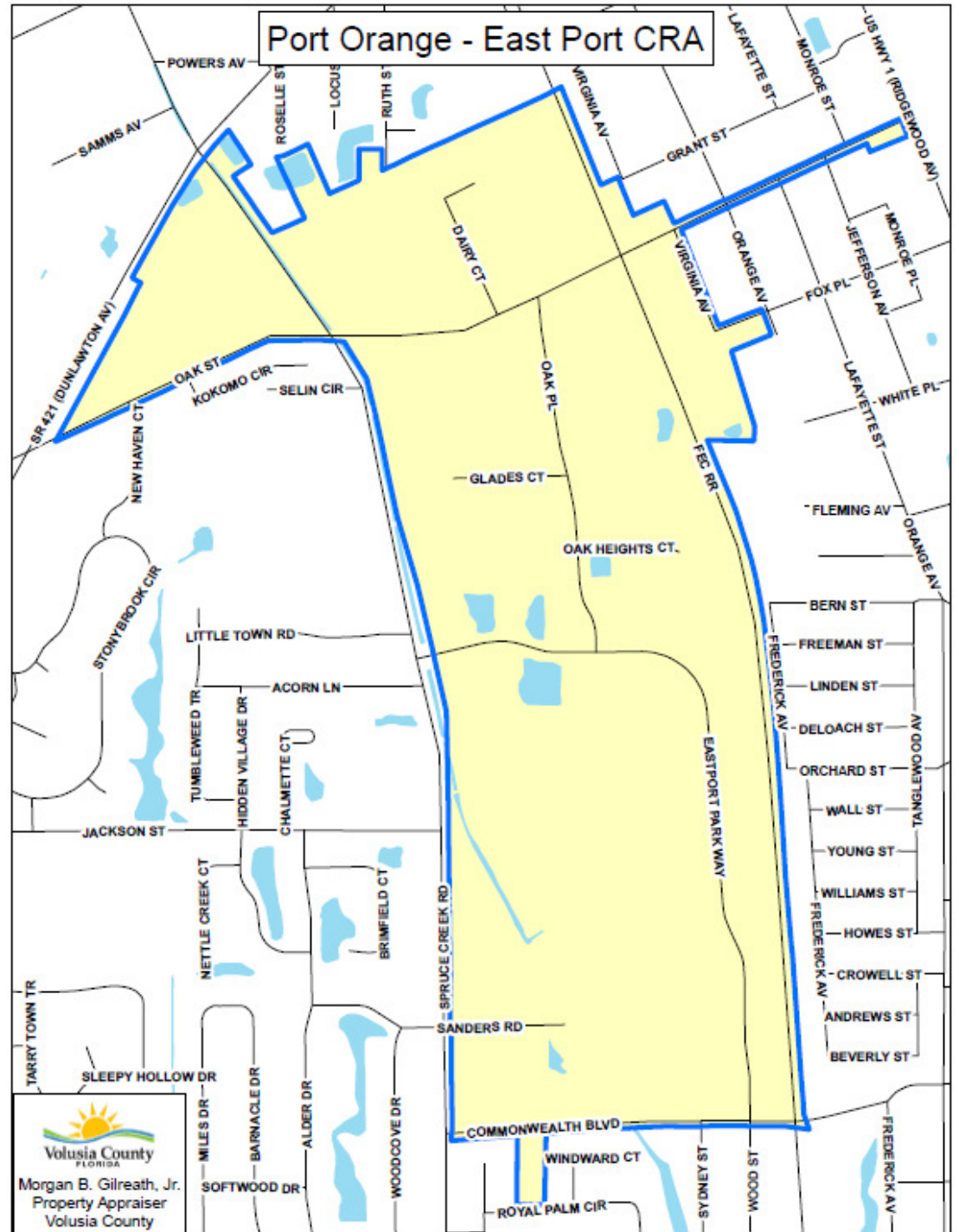
Base Taxable Value – 10,124,427



Port Orange – East Port

Base Year – 1995

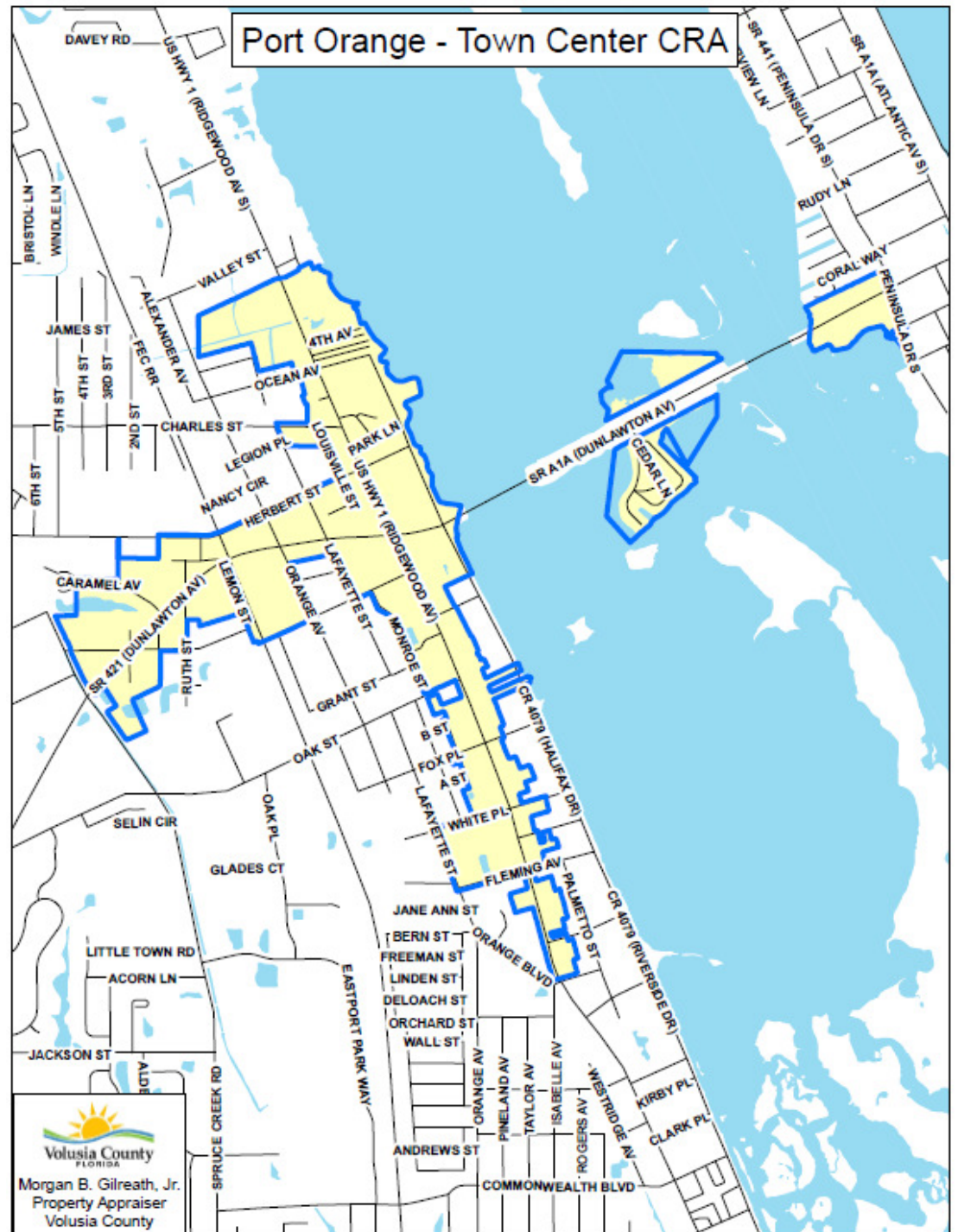
Base Taxable Value – 13,693,302



Port Orange – Town Center

Base Year – 1998

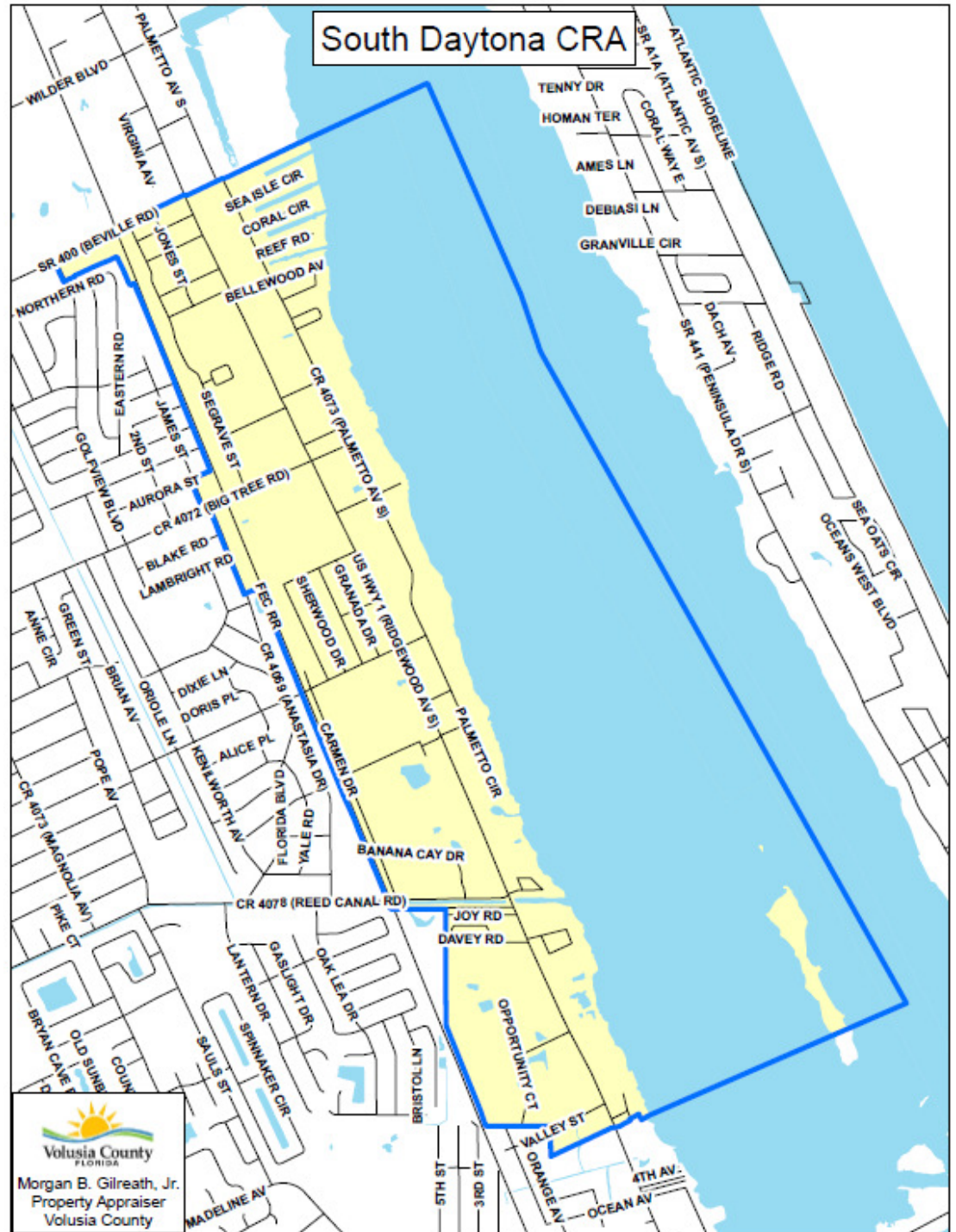
Base Taxable Value – 29,558,416



South Daytona

Base Year – 1997

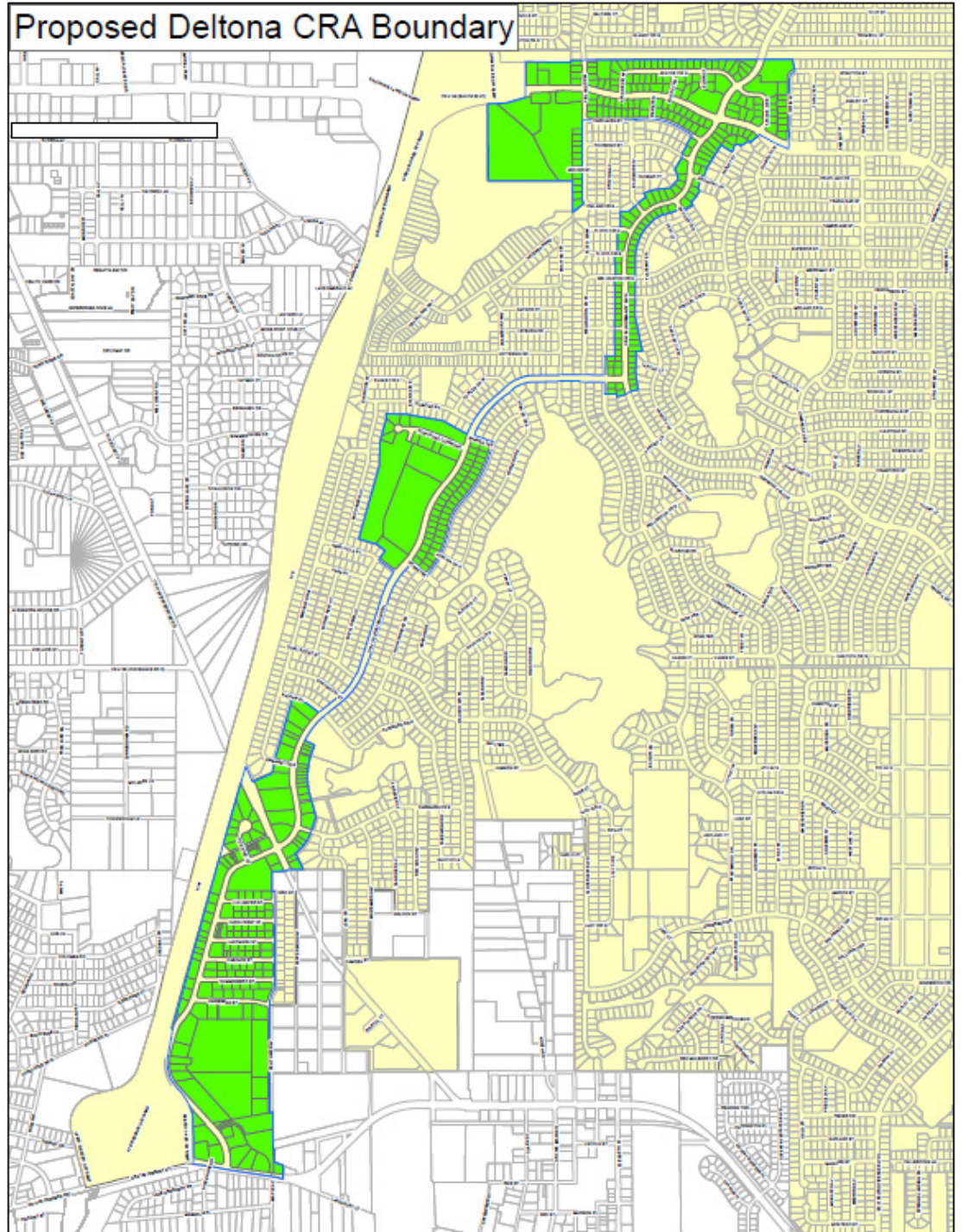
Base Taxable Value – 116,601,454



Boundary Maps of
Proposed Community
Redevelopment Areas (CRAs)

Proposed

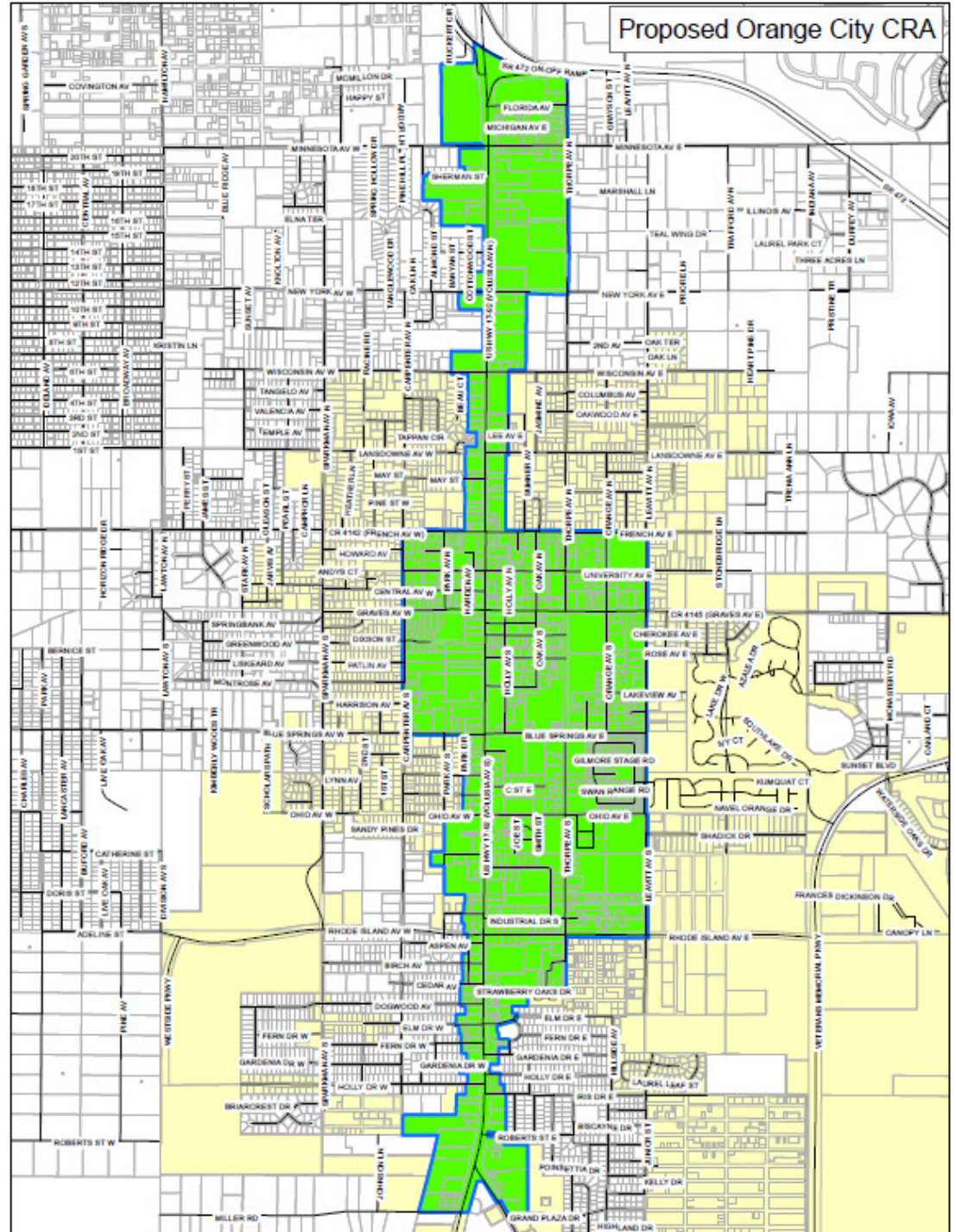
Deltona CRA



Proposed
Edgewater CRA

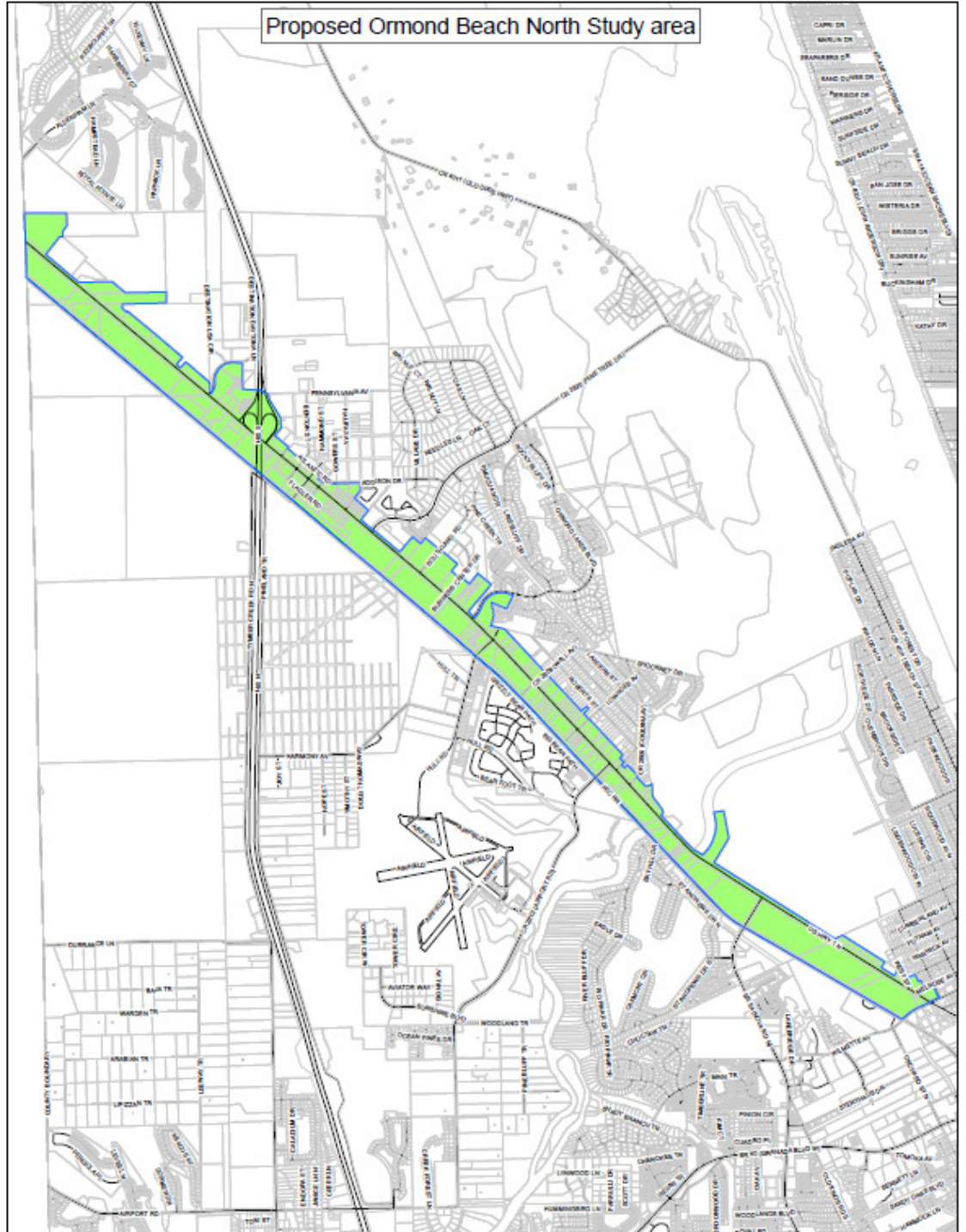


Proposed
Orange City CRA



Proposed

Ormond Beach - North CRA



Proposed

Ormond Beach - South CRA



Proposed

New Smyrna Beach CRA

