

Florida Inland Navigation District

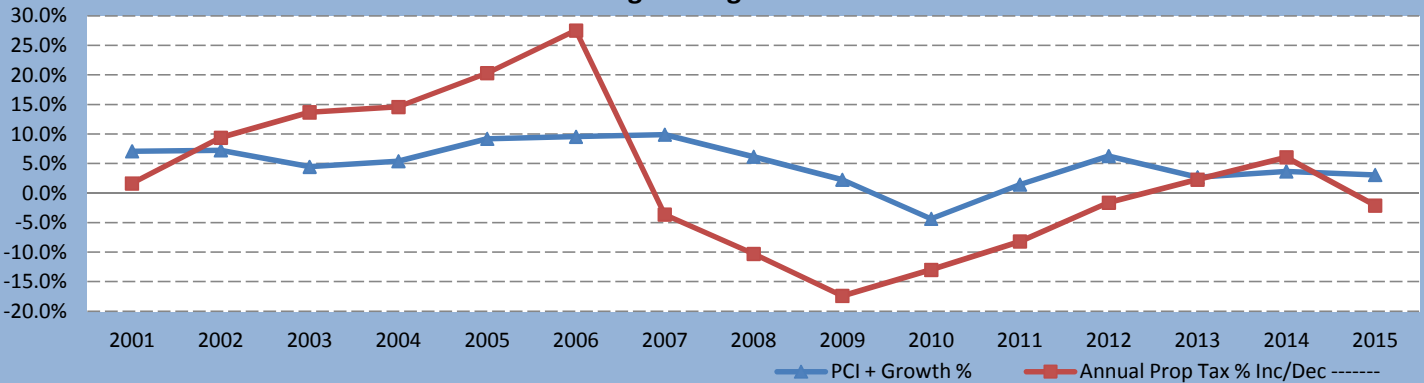
2001 Final Roll through 2015 Final Roll after VAB - PCI to Tax Roll & Taxes Levied Increases

Tax Roll Year	Property Taxes Levied	Taxable Value	New Const Taxable Value	Amt of \$\$ Taxes Levied Inc/Dec	% Inc/Dec in Tax Roll	Prior Calendar Yr PCI	Growth %	PCI + Growth %	Annual Prop Tax % Inc/Dec
2001	675,335	17,541,162,376	446,798,312	10,949	8.2%	4.53%	2.5%	7.1%	1.6%
2002	738,718	19,187,479,303	556,849,842	63,383	9.4%	4.34%	2.9%	7.2%	9.4%
2003	839,784	21,812,579,151	661,290,488	101,066	13.7%	1.43%	3.0%	4.5%	13.7%
2004	962,337	24,995,770,922	795,896,095	122,553	14.6%	2.21%	3.2%	5.4%	14.6%
2005	1,157,845	30,073,908,112	984,510,615	195,508	20.3%	5.92%	3.3%	9.2%	20.3%
2006	1,476,625	38,353,888,285	1,000,879,793	318,780	27.5%	6.94%	2.6%	9.5%	27.5%
2007	1,423,041	41,247,558,469	1,340,448,837	-53,584	7.5%	6.66%	3.2%	9.9%	-3.6%
2008	1,276,621	37,003,506,152	1,008,228,551	-146,420	-10.3%	3.45%	2.7%	6.2%	-10.3%
2009	1,054,390	30,562,014,607	416,927,555	-222,231	-17.4%	0.91%	1.4%	2.3%	-17.4%
2010	917,387	26,590,935,214	212,198,845	-137,003	-13.0%	-5.14%	0.8%	-4.3%	-13.0%
2011	842,252	24,413,090,690	157,139,101	-75,136	-8.2%	0.80%	0.6%	1.4%	-8.2%
2012	828,666	24,019,316,690	150,275,748	-13,585	-1.6%	5.65%	0.6%	6.3%	-1.6%
2013	847,743	24,572,267,249	142,311,610	19,077	2.3%	2.13%	0.6%	2.7%	2.3%
2014	899,106	26,061,052,144	213,548,084	51,363	6.1%	2.85%	0.8%	3.7%	6.1%
2015	880,136	27,504,245,261	309,075,827	-18,970	5.5%	1.96%	1.1%	3.1%	-2.1%
2001 - 2015	30.3%	56.8%	8,396,379,303	215,750	64.7%	44.64%	29.5%	74.1%	39.3%

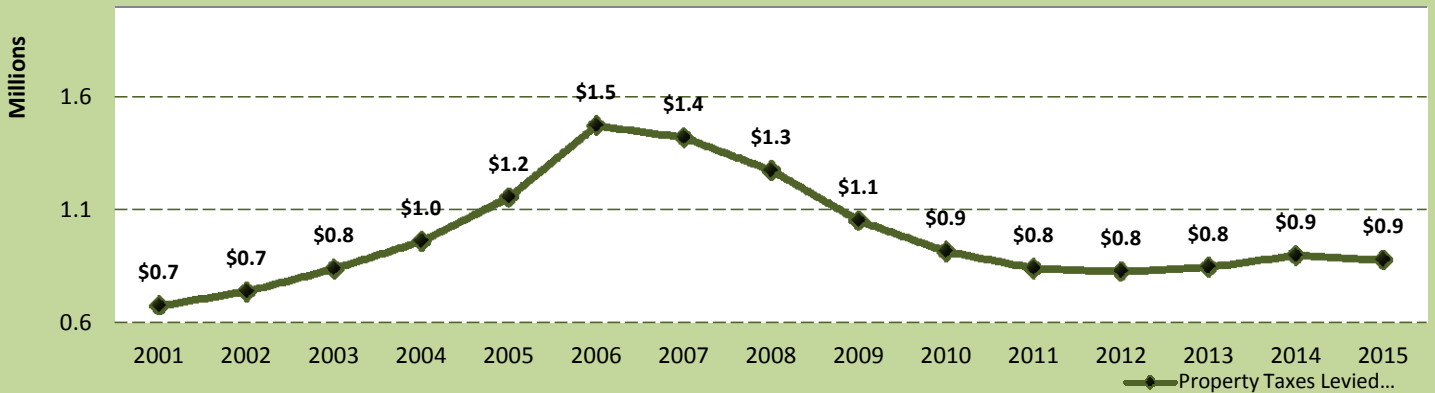
% Increase in Tax Roll includes New Construction for each year

[Total Annual] Tax Increase / PCI+Growth = -47.0%

**Florida Inland Navigation District
Percentage Change 2001-2015**



**Florida Inland Navigation District
Property Tax (Revenues Levied) 2001-2015**



Source: Morgan B. Gilreath, Jr., Property Appraiser

St. Johns Water Management District

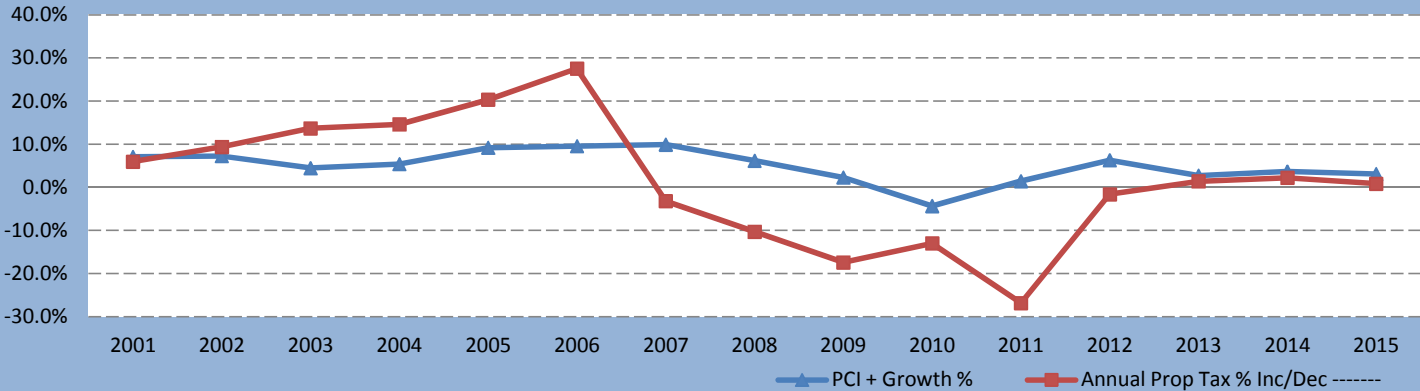
2001 Final Roll through 2015 Final Roll after VAB - PCI to Tax Roll & Taxes Levied Increases

Tax Roll Year	Property Taxes Levied	Taxable Value	New Const Taxable Value	Amt of \$\$ Taxes Levied Inc/Dec	% Inc/Dec in Tax Roll	Prior Calendar yr PCI	Growth %	PCI + Growth %	Annual Prop Tax % Inc/Dec
2001	8,104,017	17,541,162,376	446,798,312	455,476	8.2%	4.53%	2.5%	7.1%	6.0%
2002	8,864,615	19,187,479,303	556,849,842	760,598	9.4%	4.34%	2.9%	7.2%	9.4%
2003	10,077,412	21,812,579,151	661,290,488	1,212,797	13.7%	1.43%	3.0%	4.5%	13.7%
2004	11,548,046	24,995,770,922	795,896,095	1,470,634	14.6%	2.21%	3.2%	5.4%	14.6%
2005	13,894,146	30,073,908,112	984,510,615	2,346,100	20.3%	5.92%	3.3%	9.2%	20.3%
2006	17,719,496	38,353,888,285	1,000,879,793	3,825,350	27.5%	6.94%	2.6%	9.5%	27.5%
2007	17,150,735	41,247,558,469	1,340,448,837	-568,761	7.5%	6.66%	3.2%	9.9%	-3.2%
2008	15,386,058	37,003,506,152	1,008,228,551	-1,764,677	-10.3%	3.45%	2.7%	6.2%	-10.3%
2009	12,707,686	30,562,014,607	416,927,555	-2,678,372	-17.4%	0.91%	1.4%	2.3%	-17.4%
2010	11,056,511	26,590,935,214	212,198,845	-1,651,175	-13.0%	-5.14%	0.8%	-4.3%	-13.0%
2011	8,088,057	24,413,090,690	157,139,101	-2,968,454	-8.2%	0.80%	0.6%	1.4%	-26.8%
2012	7,957,600	24,019,316,690	150,275,748	-130,457	-1.6%	5.65%	0.6%	6.3%	-1.6%
2013	8,067,075	24,572,267,249	142,311,610	109,476	2.3%	2.13%	0.6%	2.7%	1.4%
2014	8,245,717	26,061,052,144	213,548,084	178,642	6.1%	2.85%	0.8%	3.7%	2.2%
2015	8,314,533	27,504,245,261	309,075,827	68,816	5.5%	1.96%	1.1%	3.1%	0.8%
2001 - 2015	2.6%	56.8%	8,396,379,303	665,992	64.7%	44.64%	29.5%	74.1%	23.5%

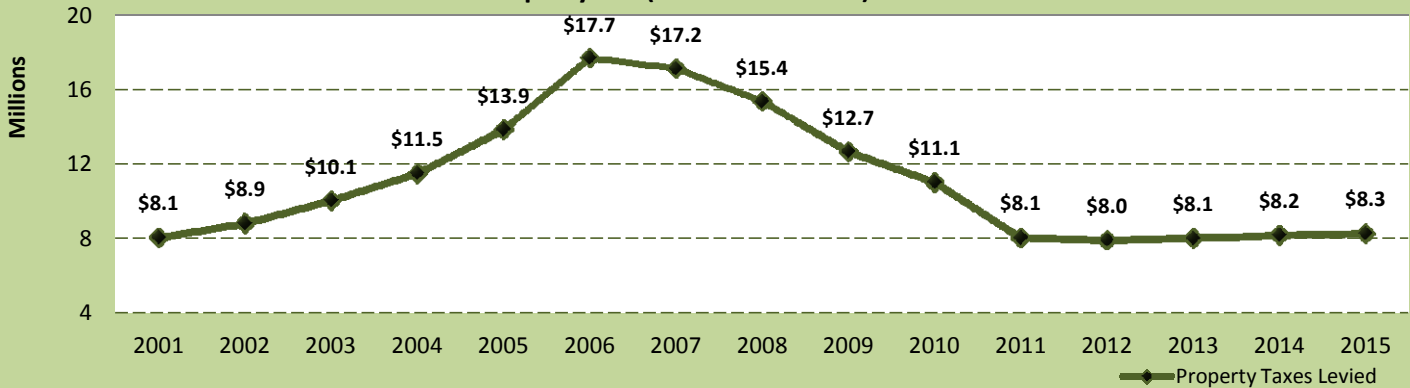
% Increase in Tax Roll includes New Construction for each year

[Total Annual] Tax Increase / PCI+Growth = -68.3%

St. Johns Water Management District Percentage Change 2001-2015



St. Johns Water Management District Property Tax (Revenues Levied) 2001-2015



Source: Morgan B. Gilreath, Jr., Property Appraiser